



March 7, 2022

Dagmara Saini
City of Stockton Municipal Utilities Department
2500 Navy Dr.
Stockton CA 95206

Dear Dagmara:

**Subject: Airport Gateway Center
Storm Drainage Basin Maintenance District**

On behalf of Siegfried Engineering, Inc., Engineer of Work for the subject maintenance district, we are submitting the following documents for the subject Maintenance District.

1. Proposed 2022-2023 Fiscal Year Budget.
2. Schedule of parcels and assessment amounts for the 2022-2023 budget and a list of the description of parcels by Assessor Parcel Number (A.P.N.).

Please refer to Amendment No. 7 to the Amended Assessment Diagram for Airport Gateway Center Storm Drain Basin Maintenance District.

The submittal appropriately addresses the requirements of Proposition 218 in that the parcels within the subject district receive one hundred percent (100%) of special benefits from the subject district and zero percent (0%) of general benefits. In addition, in accordance with the formation of the District, the maximum assessment amount has been increased using the escalator of 7.12%, which is the applicable escalator for the fiscal year 2022-2023.

Sincerely,
SIEGFRIED

A handwritten signature in blue ink, appearing to read "Paul J. Schneider", is written over a horizontal line.

Paul J. Schneider, P.E.

PJS/JS

Enclosures

cc: Mr. Kevin Beltz, City of Stockton, Finance Department (w/ encl.)
City of Stockton, City Clerk's Office (w/ encl.)



Stockton
3428 Brookside Rd.
Stockton, CA 95219
t: 209.943.2021

San Jose
111 N. Market St., #300
San Jose, CA 95113
t: 408.754.2021

Sacramento
900 Howe Ave #200
Sacramento, CA 95825
t: 916.520.2777

Modesto
100 Sycamore Ave, #100
Modesto, CA 95354
t: 209.762.3580

**AIRPORT GATEWAY CENTER
STORM DRAINAGE BASIN MAINTENANCE DISTRICT
PROPOSED 2022-2023 FISCAL YEAR BUDGET**

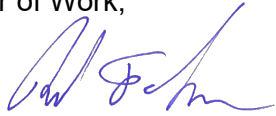
Operational Costs	\$16,119.30
City of Stockton Publicity and Advertising Costs	\$91.04
Maintenance District Attorney Fee	\$1,655.00
San Joaquin County Processing Fees	\$102.82
District Engineering Annual Engineer's Report	\$3,758.84
Professional Services	\$0.00
City of Stockton Administrative Costs	\$4,284.80
Total Administrative Costs	\$9,892.50
Contingency	\$4,257.46
Total 2022-2023 Budget	\$30,269.26
Total Amount to be Assessed by Airport Gateway Center	\$30,269.26
2022-2023 Maximum Total Assessment Amount	\$115,237.47

The improvements being maintained by this district are a storm water retention basin and appurtenances which are site specific to the parcels being assessed. The improvements and appurtenances do not provide any benefit to any parcel or parcels outside the boundaries of the district. In the opinion of the undersigned, the benefits received by the parcels assessed within the Airport Gateway Center, Storm Drain Maintenance District, from the Airport Gateway Center, Storm Basin Maintenance District, are identified as set forth by Proposition 218 as follows:

Special Benefits - 100%

General Benefits - 0%

Siegfried Engineering, Inc.
Engineer of Work,



Paul J. Schneider, P.E.

04-01-2022

Date

Airport Gateway Center
Storm Drainage Basin Maintenance District

**SCHEDULE OF PARCELS, ADJUSTED DRAINAGE AREAS &
ASSESSMENT AMOUNTS FOR 2022-2023 BUDGET**

March 7, 2022

Mx District Assessment No.	Current A.P.N.	Current Adj. Drng Area (acres)	2022-2023 Max. Assmt.	2022-2023 Actual Assmt.
2	177-460-09	5.000	\$1,601.12	\$420.56
5	177-450-07	10.960	\$3,509.65	\$921.88
10	177-450-24	11.430	\$3,660.15	\$961.40
11	177-450-27	21.540	\$6,897.61	\$1,811.80
12	177-450-28	10.040	\$3,215.04	\$844.48
24	177-460-10	28.130	\$9,007.88	\$2,366.10
26	177-450-14	23.500	\$7,525.25	\$1,976.66
29	177-450-03	0.000	\$0.00	\$0.00
30	177-450-11	0.000	\$0.00	\$0.00
31	177-450-12	24.300	\$7,781.43	\$2,043.94
35	177-450-26	0.000	\$0.00	\$0.00
42	177-460-23	66.150	\$21,182.77	\$5,564.10
43	177-450-04	17.050	\$5,459.81	\$1,434.12
44	177-450-10	8.440	\$2,702.68	\$709.90
45	177-460-06	1.100	\$352.25	\$92.52
46	177-460-07	0.882	\$282.44	\$74.18
47	177-460-08	0.763	\$244.33	\$64.16
48	177-460-01	0.895	\$286.60	\$75.28
49	177-460-02	0.616	\$197.26	\$51.80
50	177-460-03	0.476	\$152.43	\$40.02
51	177-460-04	0.576	\$184.45	\$48.44
52	177-460-05	0.816	\$261.30	\$68.62
53	177-450-30	10.160	\$3,253.47	\$854.58
54	177-450-06	4.190	\$1,341.74	\$352.42
55	177-450-13	20.420	\$6,538.96	\$1,717.58
60	177-450-31	2.730	\$874.21	\$229.62
61	177-450-32	4.630	\$1,482.63	\$389.44
62	177-450-33	48.872	\$15,649.95	\$4,110.78
63	177-450-34	7.620	\$2,440.10	\$640.94
64	177-450-35	18.440	\$5,904.92	\$1,551.04
65	177-450-36	10.140	\$3,247.06	\$852.90
		<u>359.866</u>	<u>\$115,237.47</u>	<u>\$30,269.26</u>

**AMENDMENT NO. 7
ASSESSMENT DIAGRAM
AIRPORT GATEWAY CENTER
STORM BASIN MAINTENANCE DISTRICT,
CITY OF STOCKTON, SAN JOAQUIN COUNTY,
CALIFORNIA**

BEING A PORTION OF SECTIONS 13 & 25, C.M. WEBER GRANT
CITY OF STOCKTON, COUNTY OF SAN JOAQUIN, CALIFORNIA

**STOCKTON, CALIFORNIA MARCH, 2021
SHEET 1 OF 1**

NOTES:

1. THIS MAINTENANCE DISTRICT CONTAINS AN UNADJUSTED AREA OF 419.8 ACRES. REFER TO THE ASSESSMENT ROLL FOR THE ACTUAL ASSESSED ACREAGE.
2. **-----** DENOTES MAINTENANCE DISTRICT BOUNDARY.
3. BASIS OF BEARINGS - THE CENTERLINE OF SPERRY ROAD.
4. **M42** DENOTES MAINTENANCE DISTRICT ASSESSMENT NUMBER.
5. THE UPDATES TO AMENDMENT NO. 4 OF THE ASSESSMENT DIAGRAM SHOWN HEREIN REFLECT REVISIONS THAT WERE MADE BY THE SAN JOAQUIN COUNTY ASSESSOR, DURING THE 2009-2010 TAX YEAR, TO BOOK 177, PAGE 34, WHICH HAS BEEN REPLACED WITH PAGES 45 AND 46.

FILED IN THE OFFICE OF THE CITY CLERK OF THE CITY OF STOCKTON THIS ____ DAY OF _____, 20__.

CHRISTIAN CLEGG, CITY CLERK

CITY CLERK OF THE CITY OF STOCKTON

RECORDED IN THE OFFICE OF THE SUPERINTENDENT OF STREETS THIS ____ DAY OF _____, 20__.

GORDON MACKAY

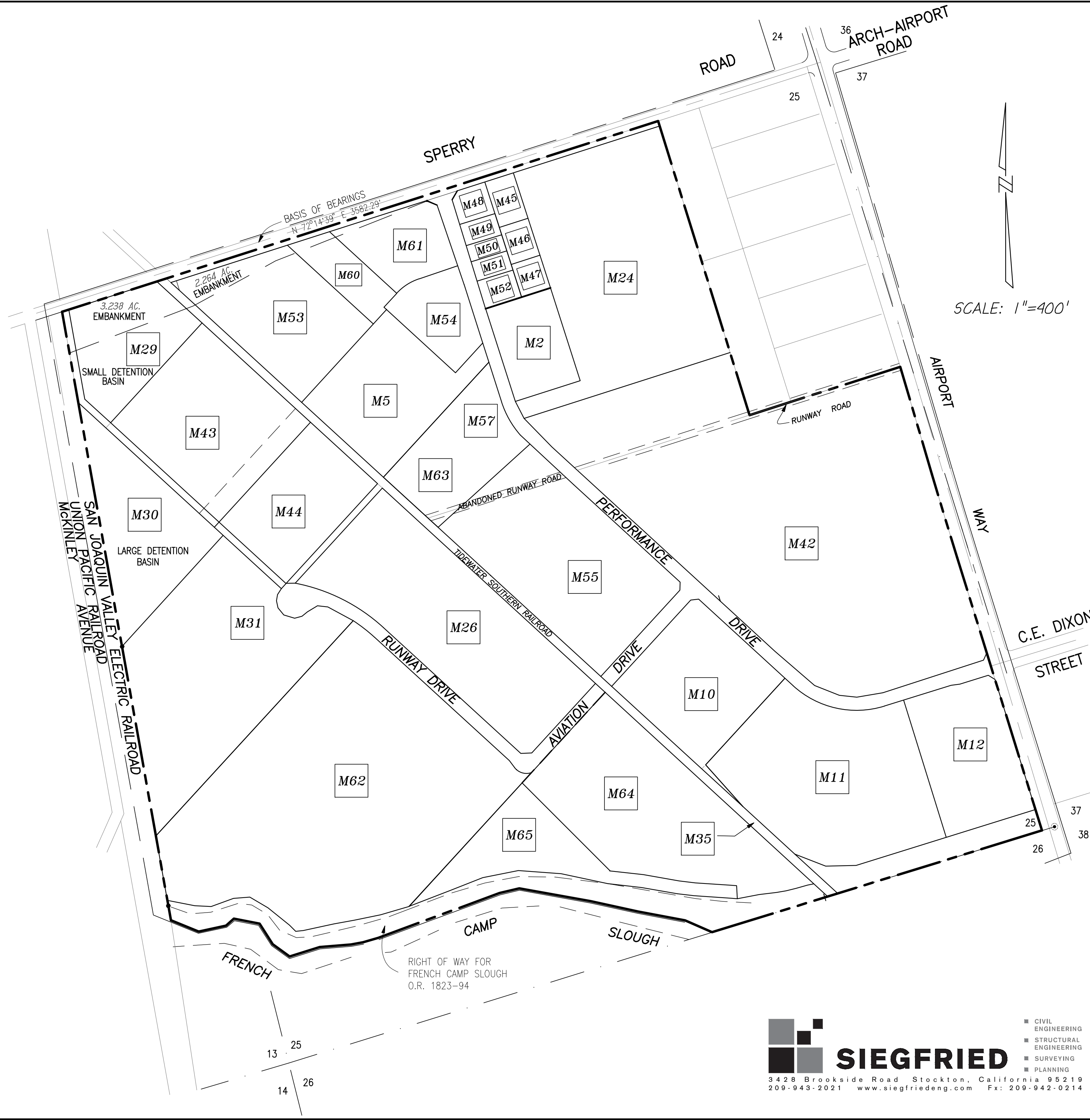
SUPERINTENDENT OF STREETS OF THE CITY OF STOCKTON

AN ASSESSMENT WAS LEVIED BY THE CITY COUNCIL OF THE CITY OF STOCKTON, COUNTY OF SAN JOAQUIN, STATE OF CALIFORNIA, ON THE LOTS, PIECES AND PARCELS OF LAND SHOWN ON THE ASSESSMENT DIAGRAM. SAID ASSESSMENT WAS LEVIED ON THE ____ DAY OF _____, 20__. SAID ASSESSMENT DIAGRAM AND THE ASSESSMENT ROLL WERE RECORDED IN THE OFFICE OF THE SUPERINTENDENT OF STREETS OF SAID CITY ON THE ____ DAY OF _____, 20__. REFERENCE IS MADE TO THE ASSESSMENT ROLL RECORDED IN THE OFFICE OF THE SUPERINTENDENT OF STREETS FOR THE EXACT AMOUNT OF EACH ASSESSMENT LEVIED AGAINST EACH PARCEL OF LAND SHOWN ON THIS ASSESSMENT DIAGRAM

CITY CLERK OF THE CITY OF STOCKTON

FILED THIS ____ DAY OF _____, 20__, AT THE HOUR OF ____:____ O'CLOCK __.M. IN BOOK __, PAGE ____, OF MAPS OF ASSESSMENT AND COMMUNITY FACILITIES DISTRICTS IN THE OFFICE OF THE COUNTY RECORDER OF THE COUNTY OF SAN JOAQUIN, STATE OF CALIFORNIA.

COUNTY RECORDER OF THE COUNTY OF SAN JOAQUIN,
STATE OF CALIFORNIA




SIEGFRIED
3428 Brookside Road Stockton, California 95219
209-943-2021 www.siegfriedeng.com Fx: 209-942-0214

- CIVIL ENGINEERING
- STRUCTURAL ENGINEERING
- SURVEYING
- PLANNING